



Relax. Revive. Restore.

SO NICE TO COME HOME TO

A typical day? Plunging head first into your adrenaline-pumped life, balancing — no, juggling — the essentials of careers, kids, carpools, and conference calls. Multi-tasking whole days into nano-moments for the sake of keeping up or if you're lucky, getting ahead. Some days, out-of-the-ordinary is the norm.

But at the end of the day, coming home is all that really matters. With every fiber of your being, you ease quietly into the soothing, bubbling comfort of your Master Spa. From here, you release the day's stress and renew your sense of self. Luxury? No, no. This is the healing that revives your mind, body, and soul. This is what brings you home.

Relax.



Relax.



REGENERATION BEGINS AT HOME

We design our spas to focus on your total personal wellness — the very nature of your relaxation response and the relief that comes from our unique brand of spa therapy. We concentrate on the core of your being, creating the “ultimate body therapy system” that soaks and soothes mind and muscles alike with massaging jets of hydrothermal, pulsating power. The result is a revitalized, often exhilarating, feeling of renewed living — a holistic sense of enhanced health and perception. So we have come to realize that with every spa we build, we are helping individuals enjoy some of the best moments of their lives.

Revive.



Revive.



Water is the very substance that sustains us inside and out. But when combined with thermal therapy, water gains a splendid influence over stress and can fully rejuvenate the body. From ancient cultures to our own progressive pace, hydrothermal therapy continues to be the preferential treatment for relieving pain, stimulating digestion, and improving circulation and immune systems. All that from something so fundamental — and now, something so fun!

With Master Spas high-tech advancements, you have the ability to connect the therapeutic powers of water with the controls and comforts of patented spa relaxation. The acclaimed Legend Series Xtreme® provides innovative therapeutic designs, continuous circulation, filtration, and heating systems that give you the full benefit of buoyancy, heat, and massage. We may not have invented hydrothermal therapy, but we fully intend to make history by perfecting it.

Restore.





Restore.



FOR YOU, ONLY THE BEST SEAT IN THE HOUSE

Part of what makes every Master Spas tub a favorite among critics and customers is our finely-crafted, form-fitting seats that perfectly accommodate the human body. We have taken therapy to the extreme simply by creating seats that wrap you in comfort and that deliver the ultimate in hydrothermal therapy from head to toe. For example, the Xtreme Therapy Seat (XTS) utilizes 20 strategically placed jets with two whirlpools in a unique X-pattern for the neck and back and maximum coverage for the

hips, thighs, calves, arms, wrists, and hands — all with individual controls. And naturally, most Master Spas feature dual 14-nozzle Master Blaster™ jets for the best foot therapy anywhere*.

No other spa manufacturer offers as many therapeutic jet configurations as Master Spas, all within your command. Choose a full body massage ... or perhaps concentrated neck and shoulder relief ... or a soothing foot massage ... or a relaxing lounge and cool-down seat. Many jets are fully adjustable from 100 to 10 percent velocity, allowing you to customize every seat in the spa!

Experience Master Spas therapy in every seat:

- A** StressRelief™ Neck and Shoulder
- B** Lounge Seat
- C** Cool Down Seat
- D** Master Blaster™ Foot Therapy
- E** Xtreme Therapy Seat
- F** Rejuvenation Seat with Cascade Massage

* LSX 557 includes one 14 nozzle Master Blaster™



BECOME THE MASTER OF YOUR WORLD

Master Spas is putting you in complete control of your wellness. Used for centuries to help relieve pain, improve circulation, reduce swelling, and alleviate stiffness, magnetic therapy is being reborn in the world of modern medicine. As more doctors and physical therapists use magnetic therapy for the treatment of back problems, arthritis, and sports injuries, nearly 70 percent of all professional athletes regularly use magnetic therapy for pain relief and performance enhancement.



Our patented Master Force Bio-Magnetic Therapy System applies strategically placed neodymium rare earth magnets to two pressure points behind the neck and eight through the shoulders, back and seat areas in our exclusive reverse molded seat.



Our exclusive Reverse Molded Neck Jet Seat features specially designed shoulder jets that apply tension-relieving massage where it's needed most, across the neck and shoulders.



Our Master Blaster™ Foot Therapy System uses dual jet clusters* with 28 total individual nozzles designed to rejuvenate your body through an encompassing foot massage. This unique form of reflexology is bolstered by scientific studies into the health benefits of foot massage. Our Master Blaster™ Foot Therapy System is powered by a separate oversized pump, generating 165 gallons per minute of powerful yet soothing foot relief.

* LSX 557 includes one 14 nozzle Master Blaster™





THE ULTIMATE RELAXATION FOR WORLD LEADERS

Historically, Camp David (sometimes called “the weekend White House”) is a wonderful, wooded retreat that every U.S. president since FDR and many foreign heads of state have used to relax and release the pressures of the toughest jobs in the world. So, when the property’s management called Master Spas to install a luxury hot tub at the secluded haven, we had the perfect spa ready and waiting. Our LSX1050 is the ultimate relaxation machine and ideally suited for helping world leaders clear their minds.

In late 2007, Master Spas’ LSX1050 STS also received a nod of approval from the Extravaganza Moscow Exhibition, a juried show of products selected specifically for the high-wealth elite of Russia. We are proud of our accomplishments and accolades from around the globe, and we invite you to experience the same level of comfort and relaxation!



EXPERIENCE SPA THERAPY IN A WHOLE NEW LIGHT

Enhance your relaxation experience with an enlightening cascade of color. Both brighter and more reliable than fiber optic, our LED light package gives you complete control of the color from your state-of-the-art topside controls. Illuminate your filter lid, pillows, reverse molded neck seat, Xtreme Therapy Seat, sparkling water features, and more with a rich spectrum of inviting colors.



YOU'RE IN EXCELLENT COMPANY

Both our products and our company are recognized by the spa industry's most distinguished and coveted awards as well as many notable organizations. ABC Television's *"Extreme Makeover: Home Edition"* recently featured the Master Spas Legend Series; and a Master Spa received a Best Buy Award in the premium category by *"Consumers Digest Magazine"* — an exclusive acknowledgement of a product that merits special attention by offering outstanding value for its price. More recently, producers of Discovery Channel selected Master Spas to be featured on the network's *"How It's Made"* program that shows a walk-through from concept to completion of various products.

Our growing list of awards and accolades includes:

- *Consumers Digest* — Best Buy Award, Premium Category
- SpaRetailer Trade Certified — identifies the top tier suppliers in the hot tub industry. It means Master Spas is the Best of the Best
- Spa Search Certified — the highest endorsement rating, rewarding quality and service in the hot tub industry
- Recipient of the BBB Torch Award for Marketplace Ethics
- INSPIRE Award — the hot tub industry's top award
- Ernst & Young — Entrepreneur of the Year
- The Blue Chip Community Business Award
- ABC *"Extreme Makeover: Home Edition"*
- Discovery Channel's *"How It's Made"*



HOW WE CREATE A LEGEND

At Master Spas, we have worked for nearly 30 years to perfect your spa experience. Each design is master-crafted to achieve enhanced, innovative therapy and high-tech advancements in insulation, filtration and heating systems. Here are a few of the proprietary features that distinguish Master Spas as a leader in spa design, construction, and performance:

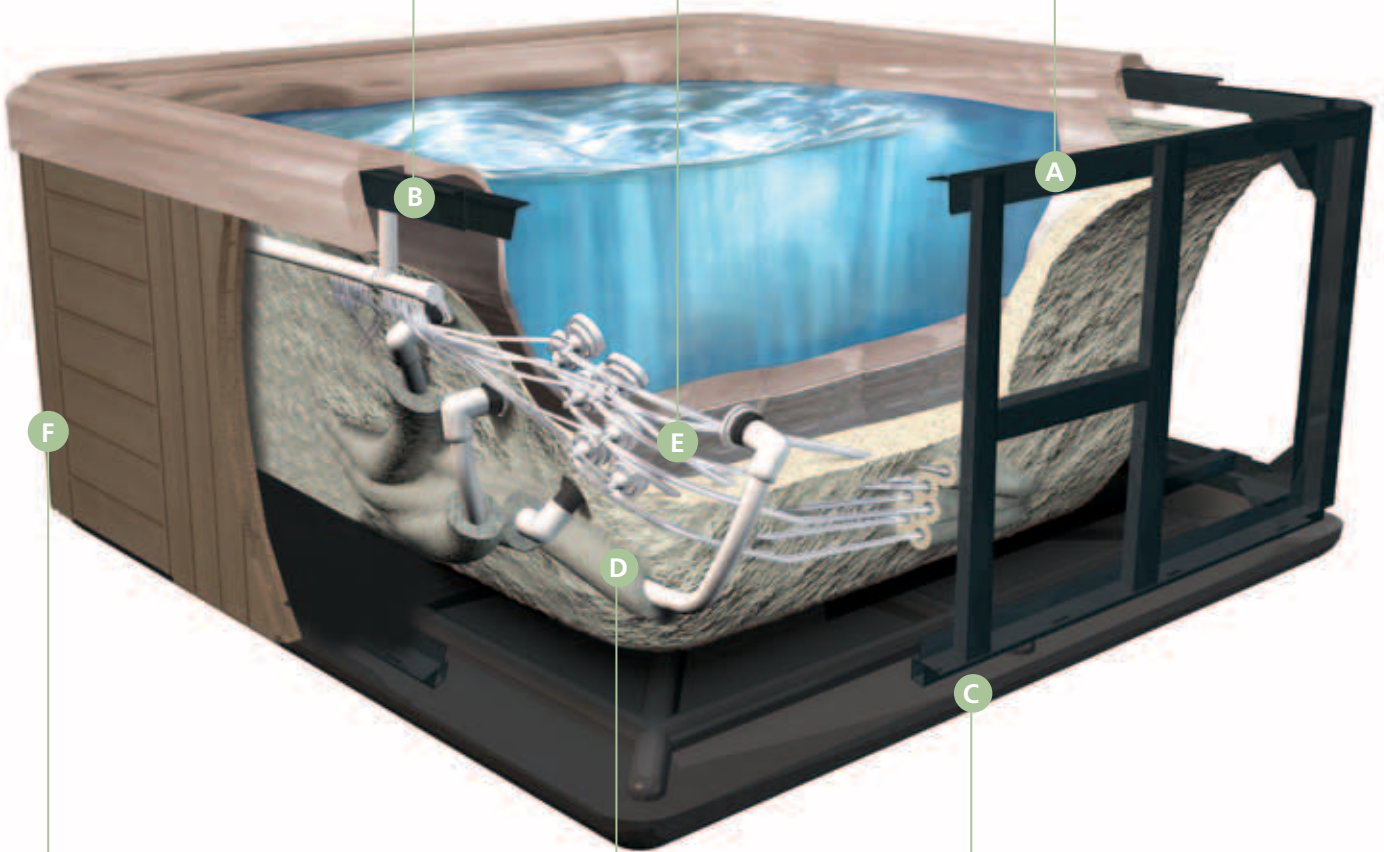
- A** Powder coated box steel provides the toughest, most durable frame you'll find anywhere.
- B** Box steel reinforcements give the frame's top flange greater strength.
- C** The frame is finished with a vac formed, high density polymer base that helps keep the heat in and unwanted pests out.
- D** Environmentally-friendly Icynene foam insulation makes a Master Spa one of the most energy-efficient spas in the industry. It also helps support the weight of the plumbing in the spa. Master Spas meets the stringent standards set by the California Energy Commission.
- E** Our manifold plumbing system ensures that pressure is distributed equally among the spa's jets.
- F** Our DuraMaster Premium™ skirting is made of high-impact, weatherable polymer. It features authentic wood grain patterns randomly etched into the polymer for a rich, three-dimensional look. And it's easy to maintain with a cloth and garden hose with virtually no fading or color change.



Box steel
reinforcements for
added durability

Manifold plumbing system for
even, consistent pressure

Strong, powder coated
box steel frame for
rigid stability



DuraMaster Premium™
skirting for handsome
appearance and easier
maintenance

Icnene foam insulation for
greater energy efficiency

Polymer base to keep heat in
and pests out

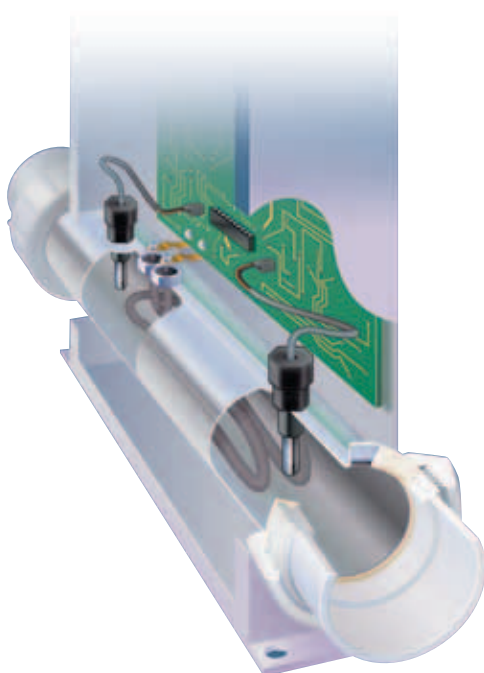


130 STEPS TO PEACE OF MIND



Master Spas' brand of reliability leaves nothing to chance. We insist on an industry-leading, 130-step inspection process for every spa we design and build. Additionally,

our advanced production facility features the latest computerized quality control technology that conducts a comprehensive battery of tests of each electrical component to ensure consistent spa performance to our precise specifications.



Master Spas include Smart Sensor Technology that helps you regulate all the functions of your unit:

- Sensors monitor each other via software that help control water flow and temperature
- Tests and assures for proper operating environment for the heating element
- Eliminates excessive cycling
- Detects any flow restrictions
- Minimizes calcium buildup on the element
- All safety functions are always active



EASY TO OWN. EASY TO ENJOY

One of our goals is to dismiss the myths that owning and caring for a top-shelf portable spa involves high costs of time, energy, and resources. With Master Spas, it simply is not true. We invest significantly in product research and development of each spa component to ensure lasting performance with easy care. And we're not done yet. We continue to improve our spas, making them easier to maintain and more enjoyable — after all, we believe that's part of the therapy, too.

Better insulation means stress-free maintenance

Master Spas meets the stringent energy standards of the California Energy Commission (CEC). We use Icynene foam technology that has dramatically raised the standard over urethane foam insulation systems used by almost all U.S. spa manufacturers. Icynene is polyisocyanurate expanding foam insulation that is environmentally safe. It allows foam to be sprayed without ozone destroying gases and there are no gas emission hazards. Icynene is the only insulation material certified by the Envirodesic Certification Program for healthier air quality.

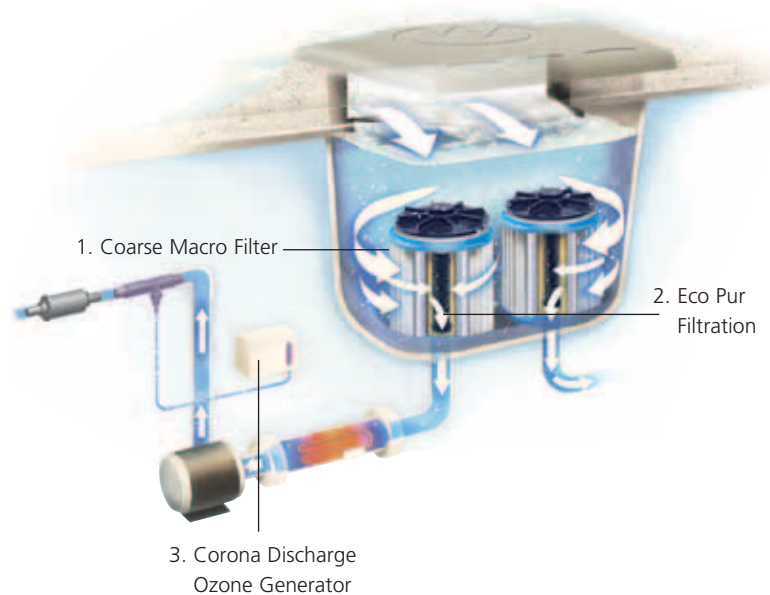
The Icynene Insulation System expands to 100 times its initial volume in seconds to insulate and air-seal the spa envelope. The resulting blanket of soft foam insulation forms a continuous thermal barrier that eliminates cold spots and significantly reduces energy costs. A consistent, comfortable temperature is maintained inside the spa, while cold air is kept outside, and condensation, mold and mildew prevented. Unlike urethane foam-based systems, which lose half their R value in as little as 2 years, Icynene maintains its insulation value for the life of your Master Spa.



Another industry first from Master Spas and available only on the LSX model, the SolarBoost

incorporates a sophisticated solar panel into a special cover. With as little as 2 hours of direct sunlight a day you can achieve 24 hours of filtration on your LSX hot tub. This patent pending system from Master Spas brings the first real hybrid hot tub to the market. Let the Sun Shine with Solar Boost. **Smarter . Cleaner . Greener**





WE'VE LEARNED A THING OR TWO FROM MOTHER NATURE

Master Spas invented and installs our patented Eco Pur® Water Filtration System on every hot tub. Doing so allows us to assure you that the quality of the water is beyond all industry standards. And we do it by using the same multi-stage filtration techniques as Mother Nature. The advantages of EcoPur filtration are many, and you can count on this process to help keep your water clean and clear.

And talk about efficiency. Every drop of water is circulated through the system 10 times per hour while using a lot less power than a standard system. That means your Master Spas portable hot tub conserves both water and energy without skipping a beat of providing pure hydrothermal therapy and relaxation enjoyment.

Multi-stage Water Polishing System

Stage 1: Macro Filter

The macro filtration stage uses a macro or coarse filter similar to natural sand and gravel filtration to remove all large contaminants and debris that enter the filter area. With our free flow filter core, you receive the most even flow of water through the entire cartridge which maximizes filtration using greater media surface. This is the latest media in spa filtration combining 100% polyester synthetic fibers with microban antimicrobial technology which filters out contaminants and inhibits the growth of bacteria that causes odors and stains.

Stage 2: Eco Pur Polishing Filters

This additional stage of filtration helps to polish the water to a sparkle.

Stage 3: Ozonation

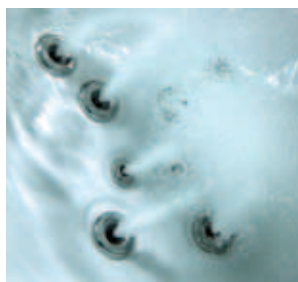
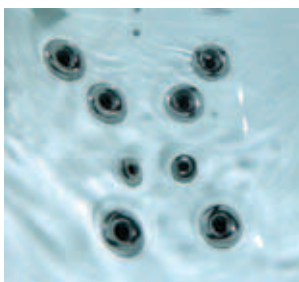
Our system uses a high output Corona Discharge Ozone generator to oxidize the water.



WE'VE TAKEN SPA THERAPY TO THE XTREME



Everything about the Legend Series Xtreme (LSX) sets it apart as the standard in luxury portable spas. With the most outstanding features and best construction in the industry, it redefines the spa experience. Recognized as a "Best Buy" in the premium category by *Consumer Digest* every year since 2002, the Legend is truly the Ultimate Relaxation Machine.



So what makes an LSX spa so special? Among the list of sophisticated features is our exclusive Xtreme Therapy Seat — a comfortably huge, ergonomically designed seat that wraps you in deluxe hydrothermal therapy from head to foot. All you are required to do is set the jets to the desired pressure and let your stresses melt away!

LSX hot tubs also boast a number of other luxuries:

One of the most sophisticated controllers in the industry

All LSX luxury portable spas and hot tubs feature one of the most sophisticated controllers in the industry. This digital panel displays each function with text — reminding you to check water chemistry, clean filter, change water and much more.

Secondary remote*

The secondary remote button allows you to control the portable spa no matter where you choose to sit.

Water features and LED lighting

Sublime lines and subtle blends of LED lighting and water features make your LSX a work of art. Practical touches, like the night time exterior lighting and cascading rain forest waterfall*, enhance the elegance and luxurious looks of every Master Spa that has quickly become America's leader of luxury hot tubs.

* Not available on the LSX 557





AT LAST, HIGH TECH MEETS THE HIGH LIFE

For the ultimate spa experience, we combined luxurious therapy with our high-performance patented Spa Theater System (STS). Every component of this technologically advanced system is setting a new spa standard, with progressive designs and beautiful functionality. Our Spa Theater System features:



- A 19" widescreen, high definition television
- DVD player/CD stereo with marine-grade speakers
- iPod MP3 docking station
- Water-resistant, floating remote control
- Cable-ready hook-up

All LSX models are available with an optional premium CD/FM stereo system with iPod docking station. Many models offer you the option of a pop-up 19-inch flat screen HDTV with a CD/FM stereo and DVD player.

The flatscreen television features a watertight polymer housing and a high-impact polycarbonate screen with anti-fog coating. The television operates on a One Touch up and down system; and you'll enjoy the convenience of a floating water-resistant remote control for the entire entertainment package and the spa's pumps.

All we can say is: Welcome to the Master Spas Theater — please take your seat and enjoy the show!

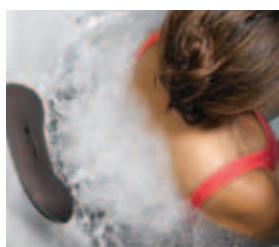


SAY 'HELLO' TO THE INNOVATIVE LSX 1000 FEATURING SOL* TECHNOLOGY

In Norse mythology, Sol served as Goddess of the Sun. Similarly, the ancient Romans honored Sol Invictus, the Invincible Sun God. We're sure both would enjoy our new LSX 1000 with its revolutionary design that features a built-in lounge, ideally suited for sunbathing or just relaxing.

Graceful lines form a unique lounge with optimum "ray reflectability" that allows sun-worshippers to catch the rays coming and going. But that's just the beginning. The LSX 1000 delights the senses with dancing water, 115 jets, two 14-nozzle Master Blasters™, and four powerful pumps focused on complete stress relief therapy.

* Sun Optimization Lounger



With the remarkably recliner-like Comfort Wedge seat, the Master Spas Signature Xtreme Therapy Seat, its glimmering lights and soothing audio-video options make this the most luxurious and handsome hot tub available.

The LSX 1000 with SOL technology is perfectly crafted to help you relax, revive, and restore. Simply put, the LSX 1000 with SOL is good for your soul.



SPA SKIRT OPTIONS

We encourage you to match the spa color with the skirting of your choice for a distinctive combination that best suits your home environment. We offer the standard DuraMaster Premium™ polymer skirting or the optional MasterSelect™ skirt that has the look of real wood but is virtually maintenance free. For definitive luxury, may we suggest the convincing DreamStone™ synthetic rock skirt.

DuraMaster Premium™



Portabello

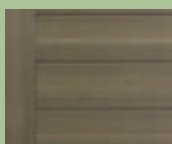


Mahogany



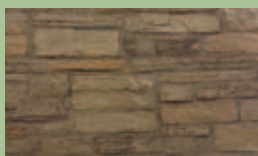
Espresso

MasterSelect™

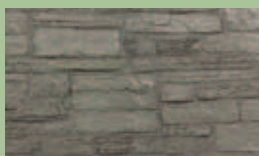


Driftwood

DreamStone™



Desert



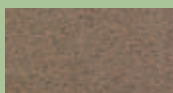
Granite

SPA COLOR OPTIONS*

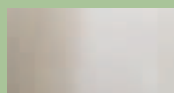
We offer a selection of versatile colors to perfectly compliment your home. Choose the one that best fits you!



Kalahari



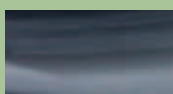
Cinnabar



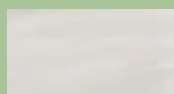
Oyster Opal



Oceanwave Opal



Midnight Opal



Sterling Silver



White Pearl



Sierra

* See dealer for available colors on LSX 1050 / LSX 1000.

LSX 557

The ultimate in personal luxury. This spa incorporates our Master Spa Xtreme Therapy Seat.

LSX 557

Dimensions:	66" x 84" x 32"
Dry weight:	565 lbs
Gallons:	210
Pumps:	3
Filtration:	75 sq. ft.
Number of jets:	31
Seating capacity:	2-3
Master Blaster™:	1 (14 jet nozzle)
Water feature:	1

OPTIONS

Master Audio Xtreme:

- CD/FM stereo
- Topside mounted remote
- 5 Speakers



LSX 700

One of our bestsellers features a deep reverse molded StressRelief™ seat and a contoured lounge, giving you a wide variety of seating options.

LSX 700

Dimensions:	84" x 84" x 38"
Dry weight:	820 lbs
Gallons:	410
Pumps:	4
Filtration:	150 sq. ft.
Number of jets:	53
Seating capacity:	4-5
Secondary remote:	2
Master Blasters™:	2 (14 jet nozzles)
Water features:	4

OPTIONS

Master Audio Xtreme:

- CD/FM stereo
- Topside mounted remote
- 5 Speakers



LSX

Enjoy the ultimate hydro-therapy of our Xtreme Therapy Seat, four pumps, dual Master Blasters™ and an optional stereo system.

LSX

Dimensions:	94" x 94" x 38"
Dry weight:	895 lbs
Gallons:	450
Pumps:	4
Filtration:	150 sq. ft.
Number of jets:	60
Seating capacity:	4-5
Secondary remote:	2
Master Blasters™:	2 (14 jet nozzles)
Water features:	4

OPTIONS

Master Audio Xtreme:

- CD/FM stereo
- Topside mounted remote
- 5 Speakers



LSX 800

This 8' model has a roomy footwell, deep reverse StressRelief™ seat and a contoured lounge that combine to make this popular spa a winner.

LSX 800	
Dimensions:	94" x 94" x 38"
Dry weight:	870 lbs
Gallons:	485
Pumps:	4
Filtration:	150 sq. ft.
Number of jets:	52
Seating capacity:	6-7
Secondary remote:	2
Master Blasters™:	2 (14 jet nozzles)
Water features:	4
OPTIONS	
Master Audio Xtreme:	Spa Theater System:
– CD/FM stereo	– 19" HD TV
– Topside mounted remote	– DVD player
– 5 Speakers	– CD/FM stereo
	– Floating remote
	– 7 Speakers



LSX 850

This spa features a reverse molded StressRelief™ seat and a unique corner pivot seat with a wrap-around pillow – allowing you to stretch out in comfort.

LSX 850	
Dimensions:	94" x 94" x 38"
Dry weight:	870 lbs
Gallons:	510
Pumps:	4
Filtration:	150 sq. ft.
Number of jets:	57
Seating capacity:	7-8
Secondary remote:	2
Master Blasters™:	2 (14 jet nozzles)
Water features:	4
OPTIONS	
Master Audio Xtreme:	Spa Theater System:
– CD/FM stereo	– 19" HD TV
– Topside mounted remote	– DVD player
– 5 Speakers	– CD/FM stereo
	– Floating remote
	– 7 Speakers



LSX 1050

This 10' spa is perfect for large families and features the Xtreme Therapy Seat plus dual reverse StressRelief™ seats.

LSX 1050	
Dimensions:	120" x 94" x 39"
Dry weight:	1,115 lbs
Gallons:	595
Pumps:	4
Filtration:	150 sq. ft.
Number of jets:	62
Seating capacity:	7
Secondary remote:	2
Master Blasters™:	2 (14 jet nozzles)
Water features:	5
OPTIONS	
Master Audio Xtreme:	Spa Theater System:
– CD/FM stereo	– 19" HD TV
– Topside mounted remote	– DVD player
– 5 Speakers	– CD/FM stereo
	– Floating remote
	– 7 Speakers



LSX 1000

Our new LSX 1000 with its revolutionary design features a built-in lounge, ideally suited for sunbathing or just relaxing.

LSX 1000	
Dimensions:	120" x 94" x 39"
Dry weight:	1,165 lbs
Gallons:	550
Pumps:	5
Filtration:	150 sq. ft.
Number of jets:	115
Seating capacity:	7-8
Secondary remote:	3
Master Blasters™:	2 (14 jet nozzles)
Water features:	7
OPTIONS	
Master Audio Xtreme:	Spa Theater System:
– CD/FM stereo	– 19" HD TV
– Topside mounted remote	– DVD player
– 5 Speakers	– CD/FM stereo
	– Floating remote
	– 7 Speakers







Spain

WE ARE A GLOBAL RELAXATION COMPANY

Our expertise in hydrothermal therapy has earned us worldwide recognition for spa innovation, quality, and service. In recent years, our distribution has reached across North America and abroad into Europe, Russia, and the People's Republic of China.

At Master Spas, we're teaching the world to relax, one body at a time.



China



CARES FOR CURES

Master Spas is pleased and proud to assist two foundations dedicated to finding and funding the cures for life-hindering diseases.



Along with the Lupus Foundation of America, we have initiated a campaign to help raise awareness and find a cure for this debilitating disease that affects more than 1.5 million Americans. Part of the profit from each "Lights for Lupus" spa model will go to the Lupus Foundation. Together, we can fund and find the cure.



Master Spas has joined forces with the Vera Bradley Foundation for Breast Cancer to eradicate breast cancer, a life-threatening disease, by providing financial support for research and research-related projects.

For more information, visit lupus.org and verabradley.org.

CARES FOR KIDS



With every purchase of a Michael Phelps Signature Swim Spa by Master Spas, a donation will be made to the NAZ Children's Center in Jamaica.



MASTER SPAS®

6927 Lincoln Parkway • Fort Wayne IN 46804

260.436.9100

www.masterspas.com

Your Master Spas Dealer is:

FIND US ON:



Master Spas reserves the right to change product specifications or features without notice. Master Spas is a manufacturer of spas and related products, and we stand behind every product we produce pursuant to those representations which are stated in our written limited warranty. Your dealer is an independent businessperson or company and not an employee or agent of Master Spas, Inc. We cannot and do not accept any responsibility or liability for any other representations, statements or contracts made by any dealer beyond the provisions of our written limited warranty.



LIT2011
\$5.95